



DESCRIPTION

Step into the future of yachting with the Sanlorenzo SD126, a breathtaking 37.95-meter semi-displacement yacht that seamlessly blends timeless elegance with cutting-edge technology. Designed by the renowned Francesco Paszkowski, this remarkable vessel is meticulously crafted for those who crave adventure without sacrificing luxury.

The SD126 features stunning contemporary interiors designed by Sanlorenzo's expert team, showcasing spacious living areas adorned with high-quality materials and neutral bespoke furnishings. Large windows flood the interiors with natural light, providing breathtaking views from every angle. Accommodating up to 11 guests across five exquisitely designed cabins, including an opulent ensuite master suite with a king-sized bed and panoramic windows, two VIP cabins with double bed and two convertible twin cabins of which one with an extra pullman bed.

Outdoor living is at the heart of the SD126's design. The expansive sundeck boasts luxurious loungers, a jacuzzi, and a central bar, perfect for socializing in style. The upper skylounge and aft deck provide ideal settings for al fresco dining, while the bow lounge and aft swim platform ensure easy access to the sea and a luxurious haven for outdoor enjoyment.

Equipped with state-of-the-art engineering and a maximum speed of 16 knots, the SD126 guarantees a smooth and stable cruising experience. With innovative features like zero-speed stabilizers and an extensive garage, this yacht is as environmentally conscious as it is luxurious.

Cesare Piccini

+39 3395383470 - cesare@ideayachting.com

MALTA | MONACO

SPECIFICATIONS

Builder	Sanlorenzo
Model	SD 126
Registration Year	2022
Length	37.95 m (126')
Beam	8.00 m (26' 3")
Draft (full load)	2.35 m (7' 9")
Displacement (full load)	242,000 Kg (533,519 lbs)
Tonnage	323.00 GT
Propeller type	5 blades NiBrAl "S" class
Engine	2 x 1,720 Hp Caterpillar C32, 1050 hrs
Transmission	Shaft drive
Generator	Kohler (2 x 70 Kw), 2,750 hrs
Max Speed	16 kn
Cruise Speed	12 kn
Economical Speed	11 kn
Maximum Range	2600 NM (@ Eco Speed)
Fuel tank capacity	34200 l (9035 US Gallons)
Water tank capacity	5000 l (1321 US Gallons)
Black/Grey Water Tank Capacity	3470 l (917 US Gallons)
Exterior Designer	Francesco Paszkowski
Interior Designer	Sanlorenzo
Type	Tri-deck Yacht
Hull Type	Semi Displacement
Hull Material	GRP
Superstructure Material	GRP
Decks	Teak
Cabins	5
Baths	7
Class:	RINA C Hull · Mach "Y, MCA LY3 Compliant, Malta Commercial
Flag	Malta
Price	15,500,000.00 €
Vat	VAT not Paid

ACCESSORIES

ACCOMMODATION

Up to 11 guests in 5 en-suite staterooms

Guest Cabin Configuration:

- Owner's suite on main deck forward, with double King-size bed, parquet flooring, with en-suite bathroom including His & Hers washbasins, shower room, walk-in wardrobe and Owner's office
- 2 x VIP staterooms on lower deck with double Queen-size beds, closets and en-suite bathrooms
- 2 x Twin guest staterooms on lower deck each with 2 single beds, closets and en-suite bathrooms, one of them with Additional Pullman bed. Sliding bed mechanisms to convert to doubles for higher versatility

Main deck with main saloon and formal dining room including 2 sofas, 2 coffee tables and carpet flooring. Bar area. TV with electrical raising system. Dining area with table for 10, carpet flooring and day head in corridor. Fully equipped galley.

Skylounge on upper deck with lounge, coffee table, 2 armchairs, 2 poofs, gaming table with chairs and bar area. TV with electrical raising system. Day head and pantry

Wheelhouse on upper deck forward with console navigation and communication instrumentation, small sofa, table, chart area

Crew Accommodation:

- 7 Crew in 4 cabins
- Captain's cabin on upper deck, adjacent to wheelhouse, with wide single bed, chair, desk, safe and en-suite shower room
- Crew quarters forward on lower deck with 3 bunk-bedded crew cabins, all en-suite

Crew mess with pantry and laundry area

MAIN EQUIPMENT

Stabilizers: CMC Stabilis Electra zero speed and underway electro fin stabilizers and controls

Bow Thruster: CMC Marine electrical 400V – 65 kW

Stern Thruster: CMC Marine electrical 400V – 50 kW

Steering: Electro-hydraulic system 24V DC by CMC. Single ram on each tiller arm (Port and Starboard tillers split)

Rudders: 2 x AISI 316 steel balanced style, positioned outboard of shaft line

Watermakers: 2 x IDROMAR 200 l/h each

DROMAR UV sanitizer

Water Heaters: 2 x GIANNESCHI boilers

Waste Water Treatment: HAMANN model HL-CONT 0125

A/C System:

Powerful air conditioning system (twin chillers) with electrical and hydraulic installation, 360,000 BTU capacity

Air Compressor: 1 x GIANNESCHI

ELECTRICAL SYSTEM

Electrical System: 400V / 230V AC – 24V DC

Outlets: 220V throughout boat

Shore power connections 50Hz

2 x 30m flexible shore power cord length and 2 x five poles plug

Aft GLENDINNING Cablemasters with larger cables container 2 x CM8 100 Amp. shore power cables at transom, port and starboard side

Generators: 2 x 70 kW KOHLER @ 50Hz – 220V AC – 3-Phase

Heads: TECMA 24V freshwater flush system

ACCESSORIES

ELECTRONICS, NAVIGATION & COMMUNICATION EQUIPMENT

Engine Controls: AVENTICS electronic controls, main control in the wheelhouse, secondary controls located at Port and Starboard docking bridge deck wing stations

Wheelhouse Controls:

- o Horn
- o Wiper 1/2 and wash and timer
- o Lights
- o Compass
- o External ship lighting via monitoring system Bilge monitoring and pumps
- o Fire detection system
- o Engines displays
- o Engines throttles
- o Engines start/stop
- o Emergency stop
- o Alarm knowledge and override
- o Bow & stern thrusters control

Steering control and emergency override

Navigation System: FURUNO

Monitoring System: Navel Sanlorenzo

Chart Plotter: FURUNO / Time Zero / Nav Net Sys; four (4) 19-inch touch screen all connected with FURUNO network plus one screen for the CCTV

Full ECDIS electronic charts

Radar: Two (2) X-Band FURUNO

Depth Sounder: FURUNO / Nav Net Sys

Compass: Wheelhouse B6W1 RIVIERA White Star

Speed Log: FURUNO/AIRMAR sensor

Marine Radios: Two (2) FURUNO VHF

Autopilot: Wheelhouse: SIMRAD

Wipers: Total of three (3) wipers with wiper wash

Spotlight: ACR - operable from wheelhouse

Wind Instrument: FURUNO / Nav Net Sys

Port & Starboard Wing Stations:

- o AVENTICS controls, CAT RPM gauges, CMC bow & stern thruster joysticks, SIMRAD autopilot

CCTV:

- o PANASONIC CCTV camera system with network disk recorder, total of seven (7)

Interphone System:

- o Loud hailer FURUNO, Two (2) in cockpit; Port and Starboard side; One (1) in engine room; One (1) peak port; One (1) control room

ENTERTAINMENT EQUIPMENT

State-of-the art A/V entertainment system with Hi-Fi sound system Amplifiers, subwoofers and speakers in all areas

Wi-Fi Connections with STARLINK satellite system

ACCESSORIES

Main Saloon:

SAMSUNG 50" TV up/low system
Amplifier with 5.1 home theatre
DVD Blu-ray player
iPad Mini controller

Dining Room:

2 x Speakers

Master Stateroom:

SAMSUNG 50" TV
Amplifier with 5.1 home theatre
DVD Blu-ray player
iPad Mini controller

VIP Staterooms (x2):

SAMSUNG 40" TVs
Amplifiers with 2 speakers
DVD Blu-ray players

Twin Staterooms (x2):

SAMSUNG 40" TVs
Amplifiers with 2 speakers
DVD Blu-Ray players

Forward Deck:

4 x Speakers

Skylounge:

SAMSUNG 50" TV
Amplifier with 5.1 home theatre
DVD Blu-ray player
iPad Mini controller

Sundeck:

4 x Speakers and amplifier
iPad Mini controller

Upper Deck Aft:

4 x Speakers
iPad Mini controller

Captain's Cabin:

22" TV
Car stereo with DVD player
2 x Speakers

Crew Cabins:

Car stereo with 2 speakers

Crew Mess:

28" TV
Amplifier with 2 speakers
DVD Blu-Ray player

DOMESTIC EQUIPMENT

Main Deck Aft:

Wet bar at entry from aft deck with refrigeration, ice, bottle storage
Opening glass sliding doors to enter saloon

Saloon:

Wine cellar MIELE 40 bottles at the entrance on Port side Mobile bar in full marble
FRIGOMAR fridge

Dining:

Table with top in white Carrara marble

Main Deck Pantry:

Fully equipped with rapid MIELE dishwasher
MIELE coffeemaker
Service bar sink

Main Deck Galley:

The galley features large windows for natural light with blinds, overhead storage.
Access to the galley from the main dining area or from crew

- 2 x MIELE undercounter drawers
 - MIELE ice maker
 - 4 x FRIGONAUTICA built-in wall freezers
 - 2 x FRIGONAUTICA built-in wall fridges
 - Large walk-in freezer with stainless steel shelving VIVANDE food lift (dumbwaiter)
-

ACCESSORIES

- MIELE induction stove top
- MIELE extractor Hood
- MIELE oven
- MIELE microwave
- MIELE dishwasher
- Large sink with mixing tap
- Garbage disposal

Other:

Icemakers: Located on main deck bar area, skylounge bar and sundeck

Refrigeration: Located on main deck bar, skylounge bar and sundeck

Freezer Box: Large freezer box located on skylounge deck exterior

Skylounge:

The skylounge deck aft, provides a serene setting for guests to indulge in an al-fresco dining table for 10 with PAOLA LENTI chairs, under a covered deck with a serving buffet, a BBQ and additional seating aft

Entering the skylounge is from a double glass door, which opens to reveal a fully stocked formal wet bar, a gaming table, occasional seating and a large screen TV for viewing, even from the outside deck area

Skylounge Bar:

2 x FRIGOMAR mini-fridges

FRIGOMAR wine cellar

Skylounge Pantry:

MIELE fridge

MIELE dishwasher

MIELE ice maker

Sundeck and Bow:

Moving up to the next deck is the sundeck. Another area of complete relaxation, featuring a jacuzzi, chaise lounging and built in seating with cushions.

The Bow area has an additional lounging area, consisting of two C shaped seating areas, each with poof-type cocktail tables

Sundeck Bar:

ISOTHERM ice maker FRIGOMAR fridge

Crew Area:

MIELE microwave

MIELE undercounter fridge

Laundry Equipment:

2 x MIELE Professional washing machines

2 x MIELE Professional tumble dryers

EPIRB Ocean Signal 406

DECK EQUIPMENT

Fresh water outlets on flybridge (1), aft (1) and bow (1)

Spotlight with additional control on helm station (where applicable) including electrical connection Teak planks on main deck and upper deck ceiling

ACCESSORIES

Sundeck:

Custom Jacuzzi forward on the sundeck 8 guests surrounded by teak

- Windlasses: 2 x LOFRANS 230V 50Hz
- Anchors: 2 x POOL style galvanized
- Cleats: 2 x Per side at bow (total 4); 1 x per side (total 2) on sides; 2 x per side (total 4) aft cockpit; 1 x per side (total 2)
- Warping Capstans: 2 x LOFRANS 220V AC capstans on aft deck
- Underwater Lights: 4 x OCEAN LED lights white colour (2 x stern, 1 x each Port and Starboard)
- Passerelle: CANALICCHIO electro-hydraulic telescopic gangway with teak inserts and stainless steel handrails
- Tender Launch: 2 x Electro-hydraulic launching sliding/tilting systems with 1 winch each with Spectra line
- Garage Door: CANALICCHIO electro-hydraulic operated
- Swim Platform: Electro-hydraulic by H+B Technic

TENDERS & WATERSPORTS

WILLIAMS Diesel Jet 505 tender

2 x SEA-DOO RXP 300 RS Jet-skis

KEY FEATURES

- ✓ RINA Class / MCA LY3 Compliant
- ✓ Zero speed and underway stabilizers
- ✓ 5 En-suite Staterooms for up to 11 guests
- ✓ Main deck Owner's stateroom with opening windows
- ✓ Versatile layout
- ✓ Plenty of exterior entertaining spaces
- ✓ Covered dining on skylounge deck
- ✓ Jacuzzi on sundeck
- ✓ 7 Crew
- ✓ Maintained to the highest standards
- ✓ Fully loaded with options
- ✓ Immaculate condition

The Company offers the details of this vessel in good faith but cannot guarantee or warrant the accuracy of this information nor warrant the condition of the vessel. A buyer should instruct his agents, or his surveyors, to investigate such details as the buyer desires validated. This vessel is offered subject to prior sale, price change, or withdrawal without notice.

















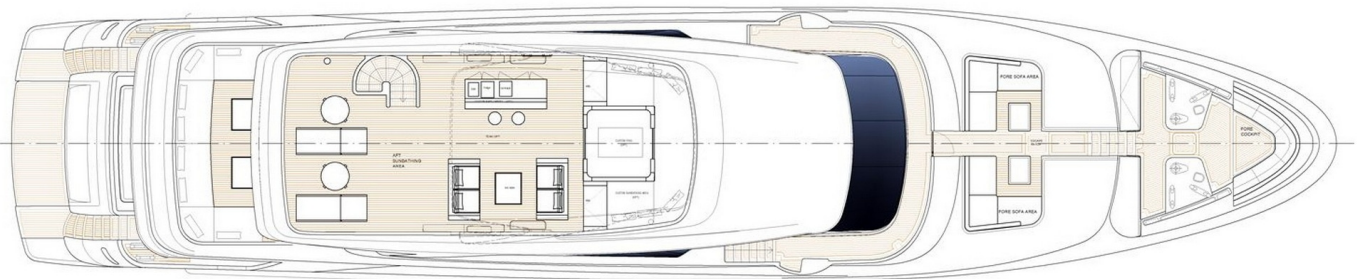


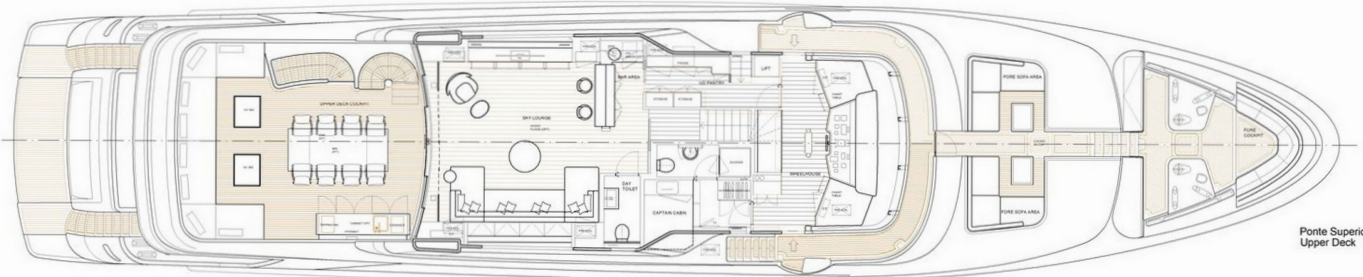




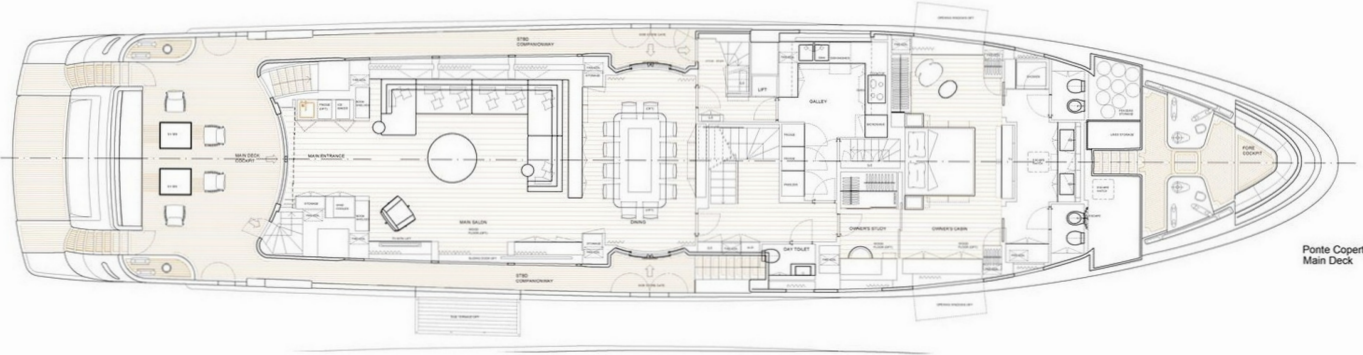


Profile





Ponte Superiore
Upper Deck



Ponte Coperta
Main Deck



Ponte Cabine
Lower Deck

