



DESCRIPTION

Dalla Pietà 72 is the epitome of luxury and sophistication, combining powerful performance with elegant design. This luxury motor yacht, characterised by strong straight lines and a sporty profile, is as impressive in style as she is in functionality.

Whether you are hosting a gathering or simply unwinding, Dalla Pietà 72 provides ample space and versatility. The aft deck is ideal for alfresco dining and lounging, while the bow seating area offers a serene spot to enjoy the views and sunshine. The spacious saloon inside and dining areas are a sophisticated space perfect for socialising, entertaining or relaxing, offering a stylish and inviting atmosphere featuring contemporary furnishings and a seamless design.

In the lower deck you will be greeted by an interior that comfortably accommodates 8 guests within 4 modern and sumptuous cabins. Each cabin is designed to provide the utmost comfort and luxury, ensuring guests enjoy a restful and indulgent stay.

From the powerful, sporty design to the luxurious amenities, every detail of this Dalla Pietà 72 is crafted to provide an exceptional yachting experience. The combination of sleek exterior lines and sumptuous interior spaces makes this yacht a true standout.

This yacht is in Turn Key condition, with several upgrades and maintenance works carried out in the last year. This ensures that every aspect of this yacht is in pristine condition, ready for you to step aboard and start your adventure without any worries.

Cesare Piccini

+39 339 5383470 - cesare@ideayachting.com

MALTA | MONACO

SPECIFICATIONS

Builder	Dalla Pietà
Model	DP 72
Registration Year	2008
Length	22.35 m
Beam	5.72 m
Draft	1.89 m
Displacement	46,800 Kg
Engine	2 x 1,670 Hp Caterpillar C32, 960 hrs
Transmission	Shafting + V drive
Generator	Kohler (2 x 13 Kw)
Max Speed	33 kn
Cruise Speed	27 kn
Fuel tank capacity	5000 l
Water tank capacity	1000 l
Waste tank capacity	250 l
People transportable	16
Cabins	4
Baths	3
Flag	Italy
Visible	Venice, Italy
Price	1,090,000.00 €
Vat	VAT Paid

ACCESSORIES

Navigation equipment

Autopilot Raymarine
Compass
Co-pilot seat Besenzoni electric
Depth Sounder Raymarine
DSC vhf
Electronic engine control

GPS Raymarine
Log
Odometer
Radar Antenna
Rudder angle indicator
VHF Radio Raymarine

Staging and technical

Anchor
Anchor Chain Washdown
Automatic Bilge Pump
Batteries New 2023
3 Battery charger Mastervolt new 2023
Bilge Alarm
Bow Thruster Quick
Bow Winches
cockpit table
Courtesy Lights
Deck Shower
Directional Spotlight
Electric Bilge Pump
Electric Windlass
Engine Alarm
Entry door
Fire Extinguishing System
Flaps Indicators
Fume/Gas Detector

Gangway Hydraulic telescopic
Horn
Hydraulic Flaps
Life Raft
Manual Bilge Pump
Platform
Shorepower connector
Side door
Stern Thruster Quick
2 Stern Winches
swimming ladder Electric
Tender Crane
Tender Garage
Tender Surmarine 330 with Yamaha 25hp
new 2023
Underwater lights
Voltage Rectifier
Water pressure pump New 2021
Winch Electric

Domestic Facilities onboard

Air Conditioning
Black Water Tank
Electric Toilet
Heater
Interior wooden floor In the main deck
Internet Connection Starlink new 2023

Inverter New 2023
Video camera
Warm Water System
Waste Water Plant
Watermaker HP 140l/h new 2023

Entertainment

DTV
Hi-Fi Sonos new 2023
Satellite Decoder
Satellite TV antenna New 2023

Speakers
TV
TV Ready

Kitchen and appliances

Ceramic hot plate Induction new 2023
Deck Refrigerator
Dishwasher
Freezer
Galley
ICE Maker

Icebox
Oven
Refrigerator
Washer dryer Miele new 2023
Winecooler

Upholstery

Cockpit Cushions
Cushions New 2023

Sunshade

FURTHER INFORMATION

ELECTRONIC Raymarine Axiom 2023:

- GPS
- Radar
- Echo Sounder
- Autopilot
- Tridata
- VHF
- Besenzoni electrical steering seats

GALLEY refit 2023:

- Induction cooking hob (2023)
- NEF Combo Oven (2023)
- Fridge
- Freezer
- Hood
- Dishwasher (2023)
- Honey Washdryer (2023)
- Wet Bar in bow cockpit: Fridge and sink

ACCESSORIES:

- Bow thruster
- Stern thruster
- Water pump (2021)
- n. 3 battery chargers + n. 1 Inverter (2023)
- Batteries (2023)
- Chain washing pump
- Bow steering station with Plotter Axiom 12 (2023)
- Air conditioning/heating in all cabins
- 140 l/h fresh water maker (2023)
- Caterpillar Panel Backup
- Ice maker
- Wine cellar
- Complete external sun cushions (2023)
- Rigid structure for sun covering canvas at stern and closing canvas
- SAT TV Antenna (2023) - Star Link for wifi (2023)
- Hidden 32" TV in the salon (2023)
- Master cabin and Guest cabins (2020)
- Sonos stereo (2023) system
- Stereo remote control - DVD/CD player
- Salon sofas new (2023)
- All the mattresses are new in each cabin (2023)
- Sunshade canvas for bow sofa (2023) + 1 new at the end of the bow (2023)
- 330 Surmarine Tender with Yamaha 25 hp (2023)

WINTER WORKS 2021/2022:

- Swimming platform and bow teak remaking (gunwale and cockpit in 2017)
-

FURTHER INFORMATION

- Boat complete polishing
- Hull taken to "zero", epoxy treatment
- Shafts replacement
- Shafts bushing replacement
- Propellers balancing
- Replacement of wheels seals
- Shafts mechanical seals replacement
- Flaps pistons revision
- Engine room soundproofing panels replacement
- Gangway service for replacement of n. 2 cylinders and sensors
- Windows perimetral rubber remaking - Horn replacement - Service of the stern winch - Central vacuum system
- Replacement of n. 1 water pump - replacement of n. 2 cameras

ENGINES:

- Heat exchangers service
- Antifreeze complete replacement
- Valves adjustment and 1000-hour complete service
- Engines and generators complete service (November 2023)

INTERIOR

- New sanitary wares in all the bathrooms
- Elm wood interiors 30 gloss
- Ultra leather Ivory wall and ceilings coverings
- Salon flooring in teak parquet
- Galley top in Abalone Corian
- Teak flooring on deck and swimming platform
- Amidship double Owner's cabin with bathroom and separate shower
- Bow double VIP cabin with bathroom and separate shower
- Twin bed Guest cabin with extra pullman bed, with bathroom and separate shower box
- Wardrobe cabin with single bed
- Mosaic and teak finishing in bathrooms













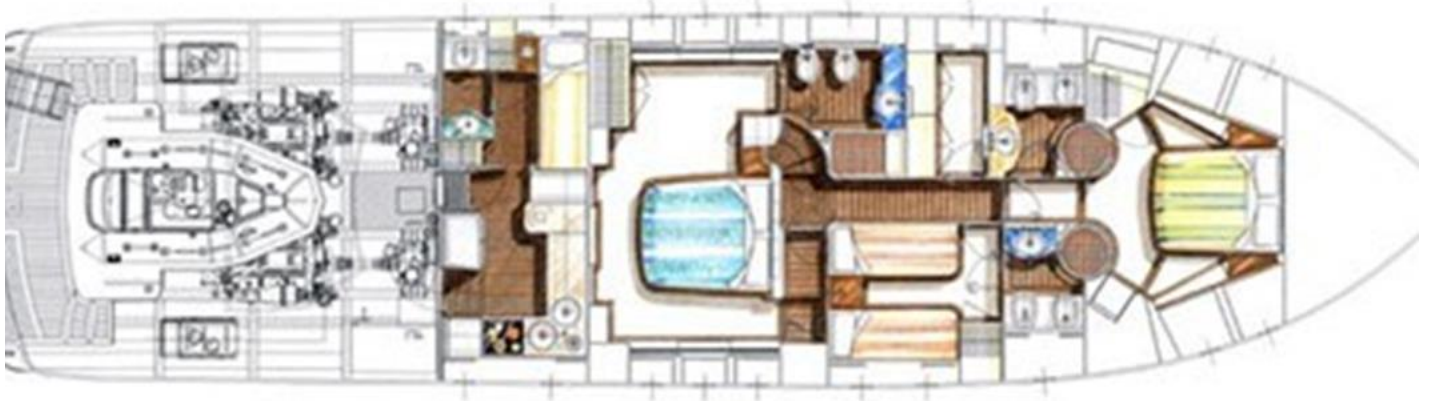












Lower Deck - 3 cabins