



DESCRIPTION

This Sanlorenzo SD92 presents in exceptional technical and aesthetical condition. The elegant and timeless design of the Sanlorenzo SD92 boasts a fantastic layout and cool contemporary decor making her perfect for long-range cruising in the highest comfort and style.

This Sanlorenzo SD92 luxury yacht for sale was designed by Francesco Paszkowski and built in GRP by the Italian yard Sanlorenzo to RINA class and delivered in 2016 as one of the yard's semi displacement SD92 motor yacht models. Twin 1224 Hp MTU diesel engines give her a range of 1,660 nautical miles at 11 knots.

She can accommodate 8 guests in 4 en-suite cabins consisting of a main deck master suite and in the lower deck one VIP suite full beam and two twin cabins, all with television screens and en suite bathroom facilities.

Marco Fiorani

+33 6 40 62 37 95 - marco@ideayachting.com

MALTA | MONACO

SPECIFICATIONS

Builder	Sanlorenzo
Model	SD92
Registration Year	2016
Length	27.60 m
Beam	7.15 m
Draft	1.83 m
Displacement	97,000 Kg
Tonnage	103.00
Propeller type	NiBrAl 5 baldes
Engine	2 x 1,224 Hp MTU V102000 M72, 1600 hrs
Generator	John Deer (1 x 33 Kw), John Deer (1 x 44 Kw), -...
Max Speed RPM	17 kn
Cruise Speed RPM	12 kn
Fuel tank capacity Material	16000 l
Water tank capacity Material	2500 l
Designer	Francesco Paszkowski
Cabins	4
Baths	5
Flag	Italy
Visible	Liguria, Italy
Price	4,500,000.00 €
Vat	VAT Paid

ACCESSORIES

Electronic tools for navigation

Autopilot Simrad AP50
2 Chartplotter Simrad 19"
Compass
Depth Sounder Simrad
Display
DSC vhf
Electronic engine control
GPS Simrad

Log Simrad IS20
Odometer
On-Board Computer
Radar Antenna
Radar Simrad 72mg
Rudder angle indicator
VHF Radio Simrad RS82
Wind Station Simard IS20

Staging and technical

2 Anchor
Automatic Bilge Pump
Batteries
Battery charger
Bilge Alarm
Bow Thruster
Bow Winches
cockpit table
Courtesy Lights
Deck Shower
Electric Bilge Pump
Electric Windlass
Engine Alarm
Entry door
Fire Extinguishing System
Flaps Indicators
Fume/Gas Detector
Gangway
Hard top
Horn
Hydraulic Flaps
Life Raft

Manual Bilge Pump
Outboard Engine Support Bracket
Platform
Rollbar
Saddles for tender
Shorepower connector
Side door
Stabilizers Hydraulic Fins
Stern Thruster
Stern Winches
swimming ladder
Teak Cockpit
Teak Side Decks
Tender
Tender Garage
Twin Steering
Underwater lights
Voltage Rectifier
Water harbor connector system
Water pressure pump
Winch Electric

Domestic Facilities onboard

220V Outlets
Air Conditioning
BBQ/Grill
Black Water Tank
Electric Toilet
Heater
Interior wooden floor In the main deck

excluding the master cabin
Inverter
Inverter Air Conditioning
Video camera
Warm Water System
Waste Water Plant
Watermaker

Entertainment

DTV
DVD
Hi-Fi
Radio AM/FM
Satellite Decoder

Satellite TV antenna
Speakers
TV
TV Ready

Kitchen and appliances

Burner
Ceramic hot plate
Deck Refrigerator
Dishwasher

ICE Maker
Icebox
Microwave Oven
Oven

ACCESSORIES

Dryer
Freezer
Galley

Upholstery Bow
Cushions Cockpit
Cover Cockpit
Cushions

Refrigerator
Washer
Winecooler

Cushions
Fly Bridge Cushions
Stern Cushions

The Company offers the details of this vessel in good faith but cannot guarantee or warrant the accuracy of this information nor warrant the condition of the vessel. A buyer should instruct his agents, or his surveyors, to investigate such details as the buyer desires validated. This vessel is offered subject to prior sale, price change, or withdrawal without notice.





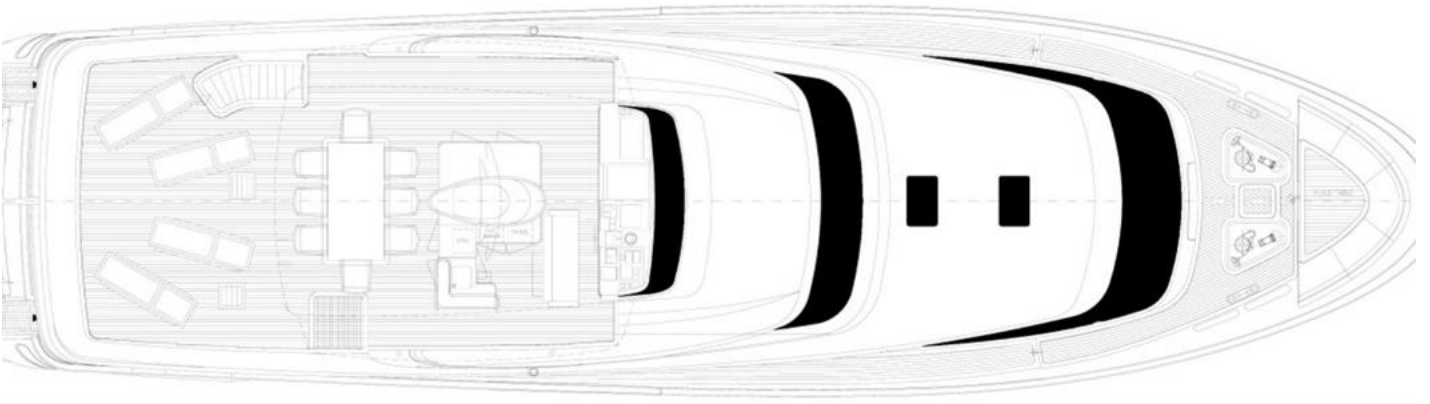
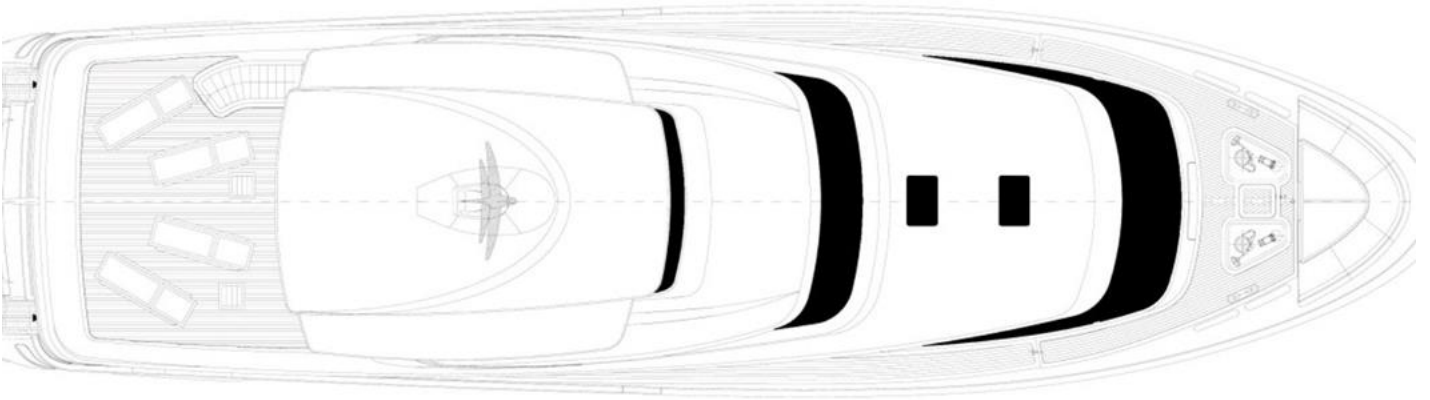




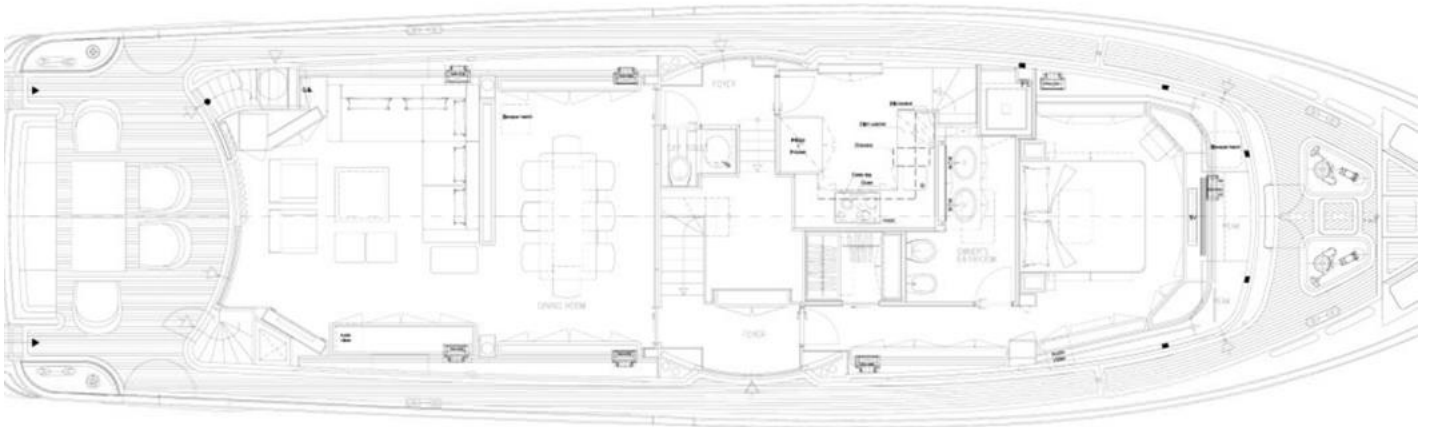




Flying Bridge



Ponte coperta / Main deck



Ponte sottocoperta / Lower deck

